

# **Alaska Pandemic Influenza Response Plan**

*Response Organization and  
Relationships*



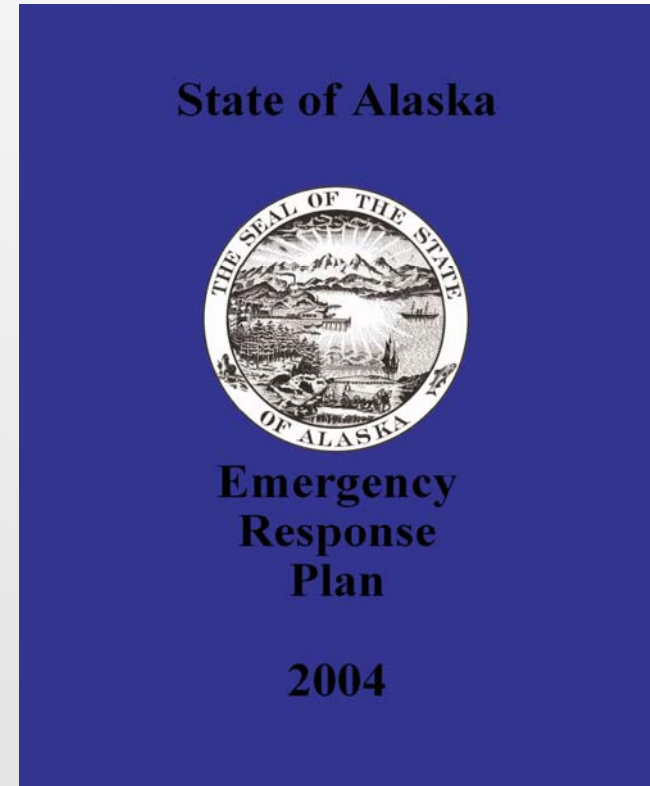
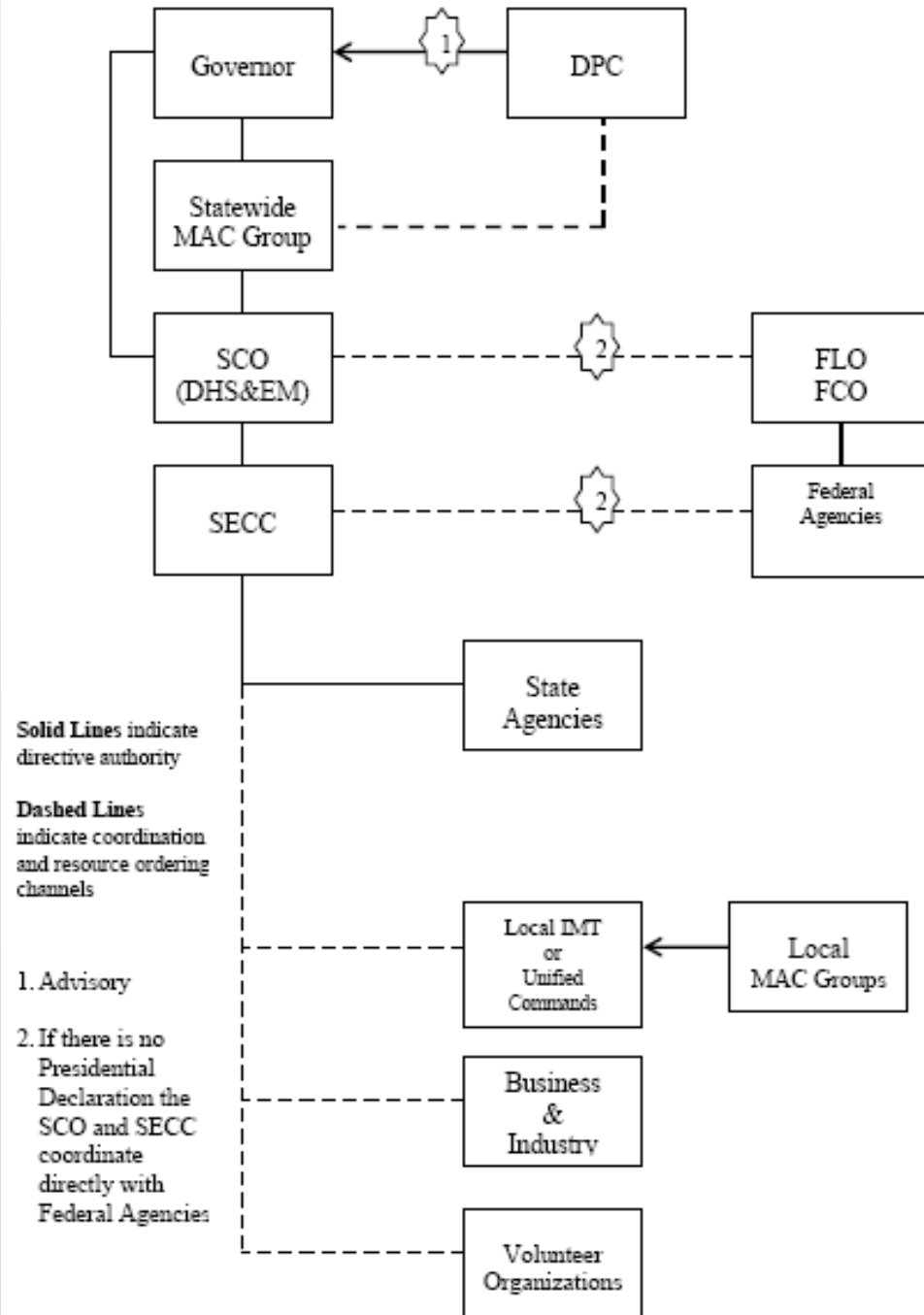
# Response Organization Trigger

## *World Health Organization (WHO) Increases to Level 4*

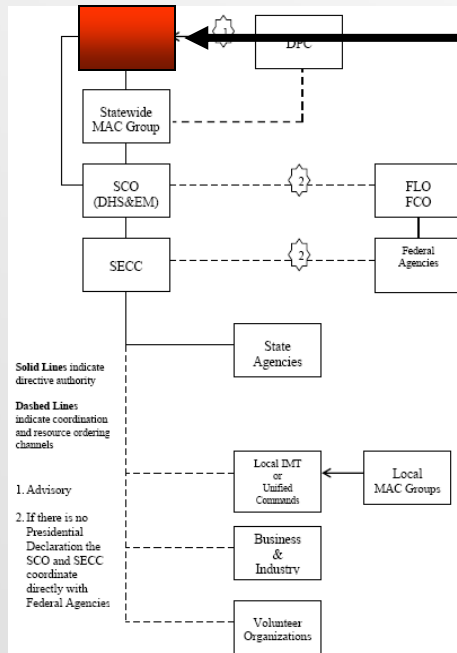
Inter-pandemic Phase New virus in animals, no human cases	Low risk of human cases	1
	Higher risk of human cases	2
Pandemic Alert New virus causes human cases	No or very limited human-to-human transmission	3
	<b>Evidence of increased human-to-human transmission</b>	<b>4</b>
	Evidence of significant human-to-human transmission	5
Pandemic	Efficient and sustained human-to-human transmission	6



# State of Alaska Emergency Response Plan Concept of Operations

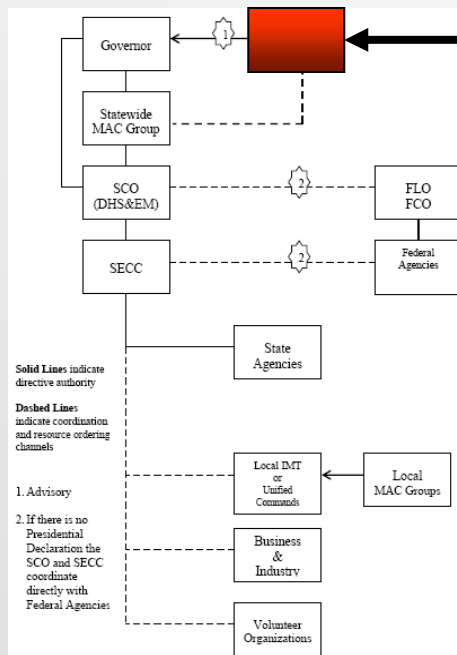


# Governor



- **Role:** The Governor is responsible for meeting the dangers presented by disasters to the state and its people.
- **If the governor finds that a disaster has occurred or that a disaster is imminent or threatened, the governor shall, by proclamation, declare a condition of disaster emergency.**
- In the event of actual enemy or terrorist attack in or against the state, or a credible threat of imminent enemy or terrorist attack, the governor may declare that a state of emergency exists
- The Governor is commander-in-chief of the armed forces of the State.
- Alaska Constitution Article 3.19 and Alaska Statute Title 26

# Disaster Policy Cabinet

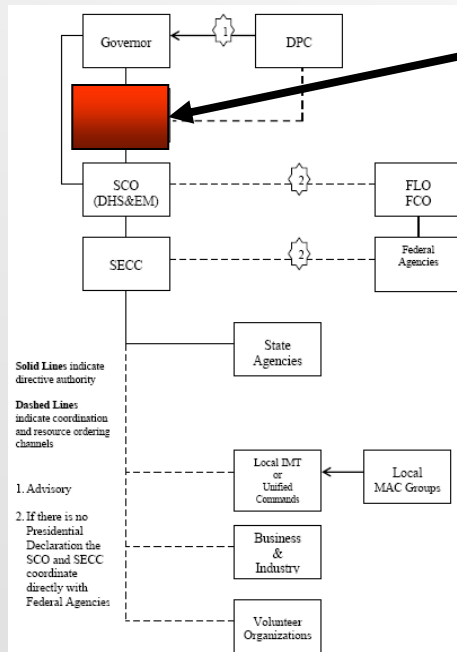


- **Role:** Provide expeditious, coordinated State agency recommendations to the Governor in response to emergencies resulting from major disaster events and homeland security events.

- **Composition:**

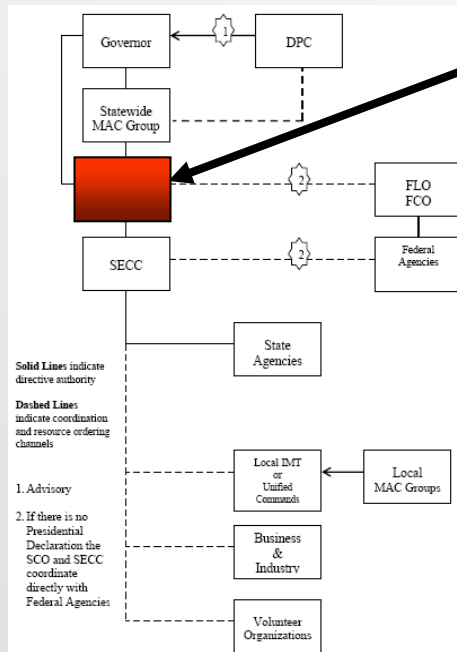
- DMVA (Chair)
- Administration
- Community, Commerce, Economic Development
- Corrections
- Environmental Conservation
- Health and Social Services
- Law
- Natural Resources
- Public Safety
- Transportation and Public Facilities

# Pandemic Flu Multi-Agency Coordination (MAC) Group



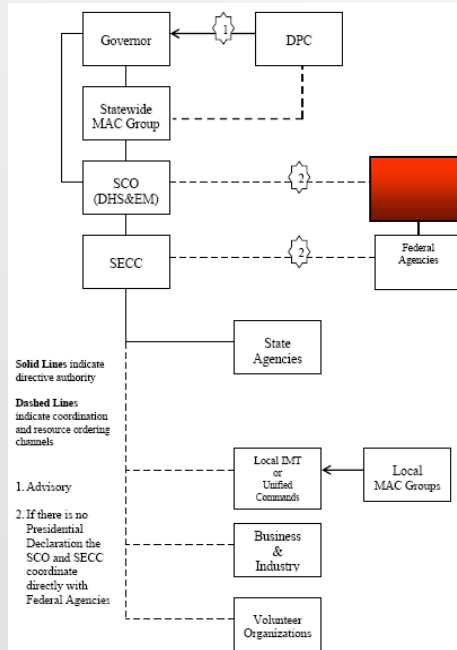
- **Role:** Accomplishes executive level interagency coordination and establishes policy, objectives, and priorities that drive the State Emergency Coordination Center
- **Composition:** Top management personnel from responsible agencies, organizations, and jurisdictions supporting or impacted by the event. Fully authorized to represent and act on behalf of their parent organization. Co-chaired by DHSS Chief Medical Officer and Director of Homeland Security and Emergency Management

# State Coordinating Officer



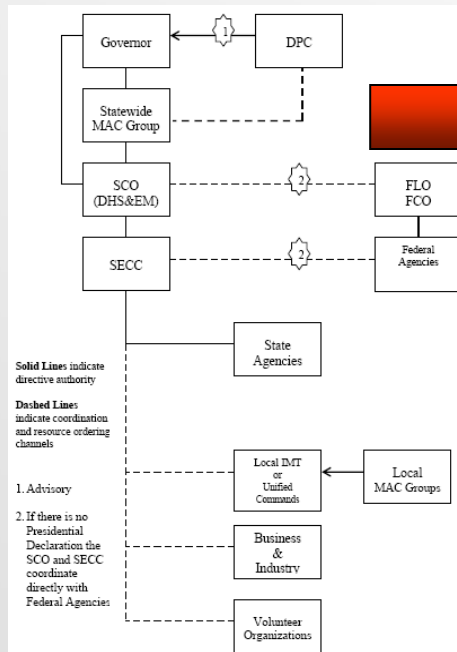
- **Role:** Principal State liaison appointed by the Governor to administer disaster recovery efforts in cooperation with Federal Coordinating Officer.
- **Composition:** Position appointed by the Governor. Typically Disaster Assistance Branch Chief, Alaska Division of Homeland Security and Emergency Management.

# Federal Liaison Officer/ Federal Coordinating Officer



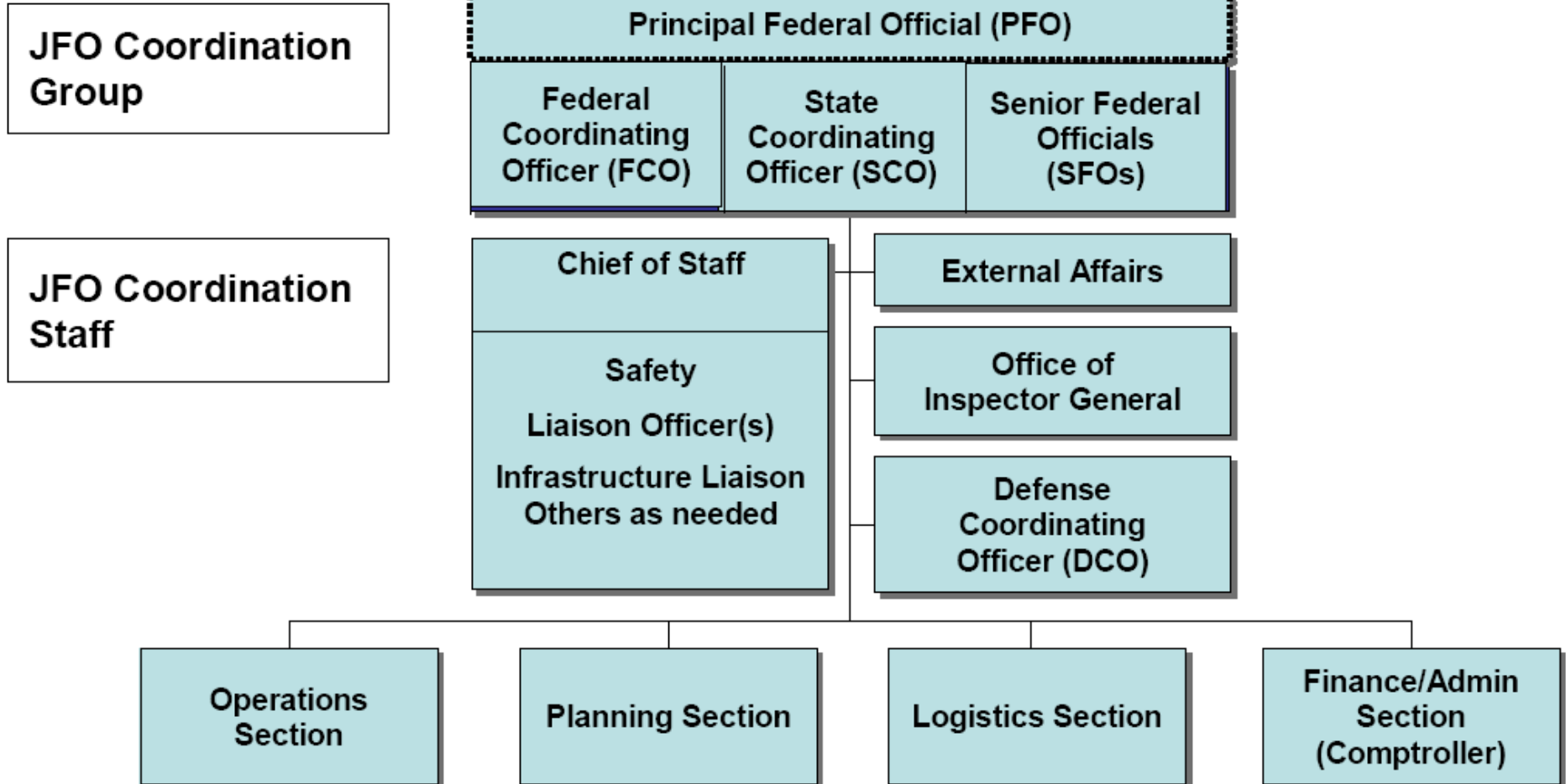
- **Role:** Principal Federal liaison assigned by FEMA Region X to provide coordination between the State of Alaska and FEMA. During a Presidentially declared disaster, becomes the Federal Coordinating Officer and administers the Federal response in cooperation with the State Coordinating Officer.
- **Composition:** Position appointed by FEMA Regional Administrator. Pre-disaster, Alaska Area Office Manager, may be reassigned during disaster phase

# Joint Field Office (JFO)/Principal Federal Official (PFO)



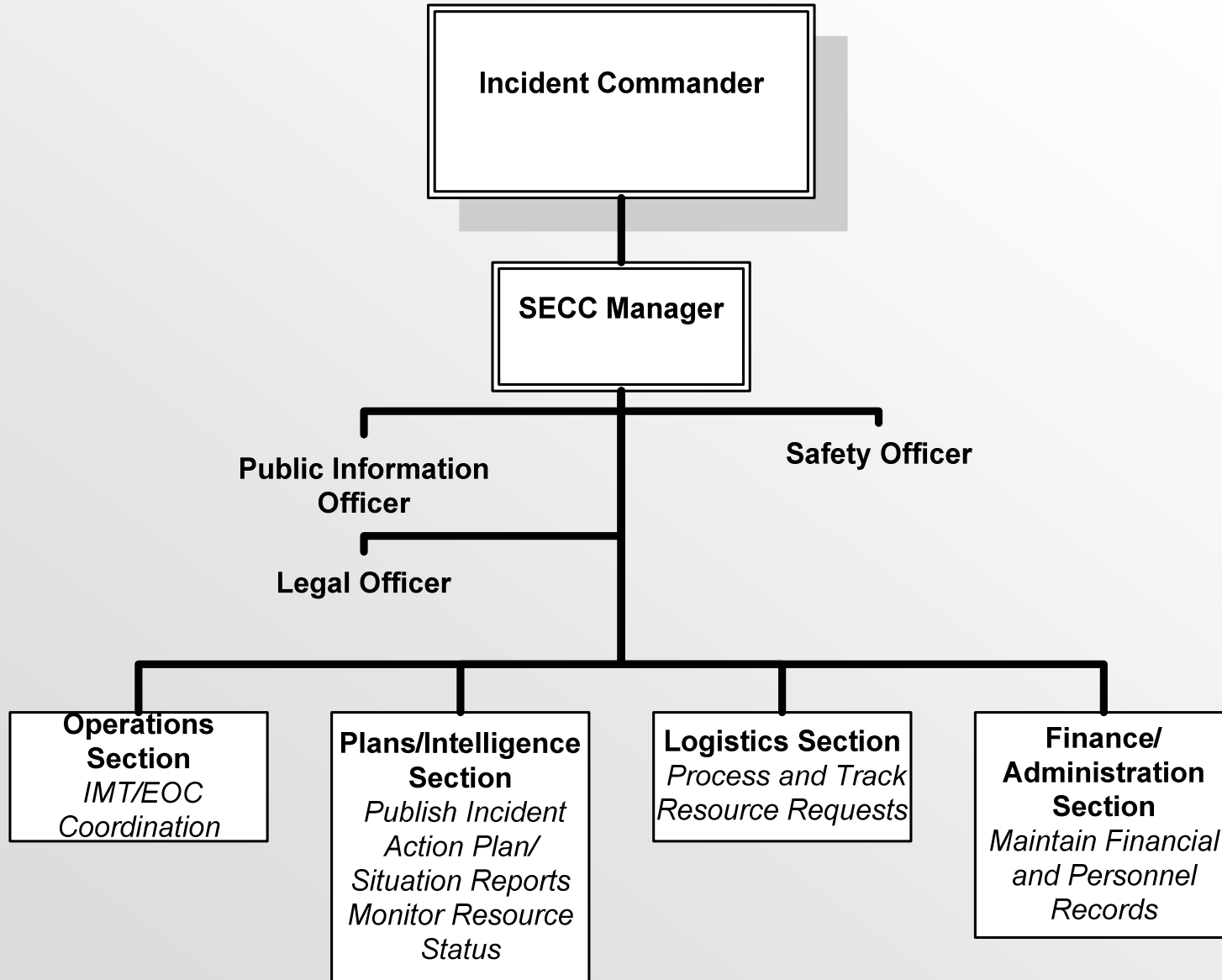
- **Role:** Federal official designated to act on behalf of the Secretary of Homeland Security to oversee, coordinate, and execute the Secretary's incident management responsibilities. The Joint Field Office is a temporary federal Facility established locally to provide a central point for Federal, State, Local, and Tribal executives to coordinate protection, prevention, preparedness, response, and recovery actions.
- **Composition:** PFO appointed by the Secretary of Homeland Security. JFO Composition: Next Slide

# Joint Field Office

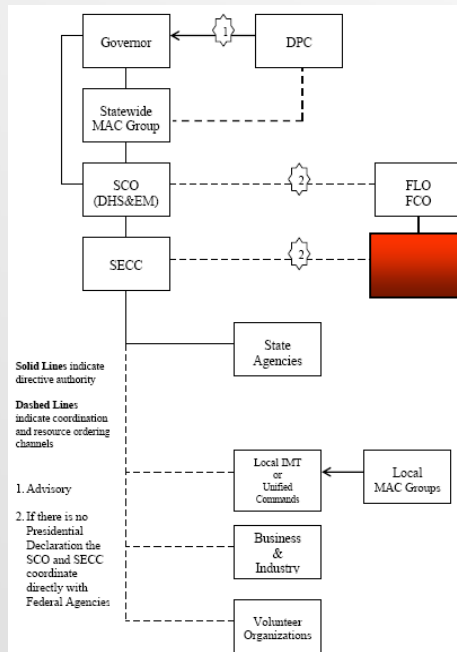




# State Emergency Coordination Center



# Federal Agencies

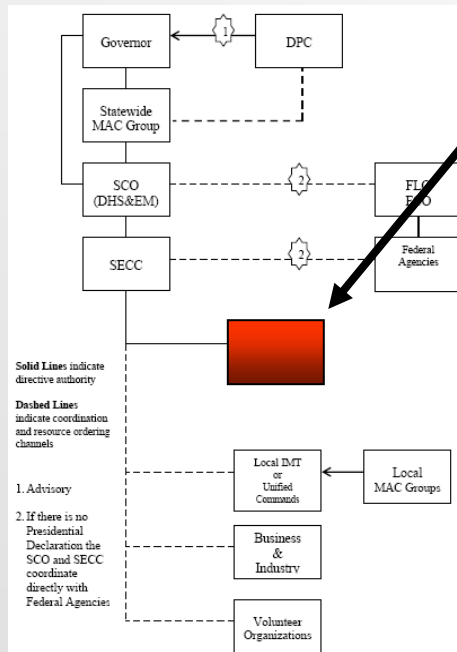


- **Role:** Take immediate actions to perform their primary missions, and respond to requests for assistance from the State of Alaska.
- **Composition:** Multiple Federal agencies operating both inside and outside Alaska. Organized into 15 Emergency Support Functions through the National Response Plan/Framework.

# Federal Emergency Support Functions

Emergency Support Function	Lead Federal Agency
ESF #1 – Transportation	Department of Transportation
ESF #2 – Communications	DHS National Communications System
ESF #3 – Public Works and Engineering	DOD Army Corps of Engineers
ESF #4 – Firefighting	Department of Agriculture
ESF #5 – Emergency Management	DHS Federal Emergency Management Agency
ESF #6 – Mass Care, Housing, and Human Services	DHS Federal Emergency Management Agency
ESF #7 – Resource Support	General Services Administration
ESF #8 – Public Health and Medical Services	Department of Health and Human Services
ESF #9 – Urban Search and Rescue	DHS Federal Emergency Management Agency
ESF #10 – Oil and Hazardous Materials Response	Environmental Protection Agency
ESF #11 – Agriculture and Natural Resources	Department of Agriculture
ESF #12 – Energy	Department of Energy
ESF #13 – Public Safety and Security	Department of Justice
ESF #14 – Long-Term Community Recovery and Mitigation	DHS Federal Emergency Management Agency
ESF #15 – External Affairs	Department of Homeland Security

# State Agencies

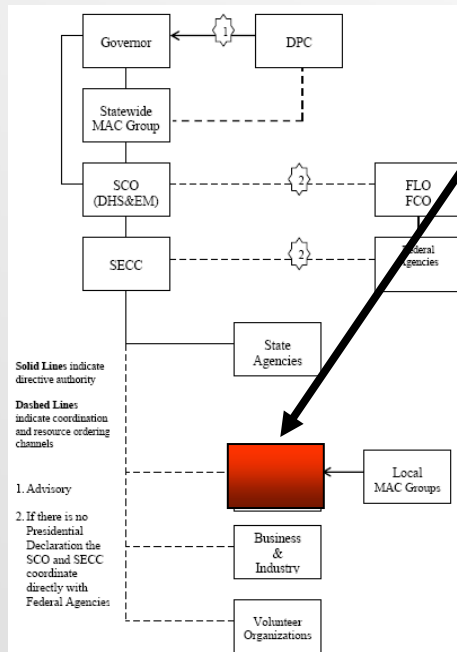


- **Role:** Take immediate actions to perform their primary missions, and respond to requests for assistance from the State Emergency Coordination Center.
- **Composition:** Multiple State Agencies. Organized into functional responsibilities through the Alaska Emergency Response Plan.

# State Emergency Functions

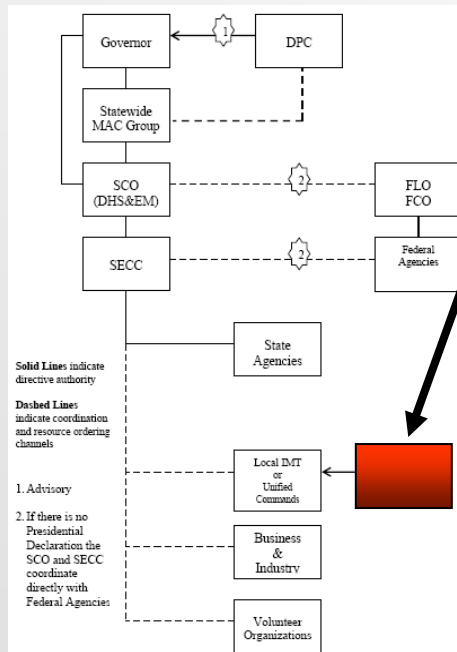
Responsibility  P = Primary Functional S = Support	EVENT	Coordination & Control	Communications	Warning	Public Information	Public Safety	Human Services	Public Works	Natural Resources	Damage Assessment	Mass Casualty	Mass Care	Finance &	Recovery
	Organization													
Governor		S			S									
State Emergency Coordination Center (SECC)		S	S	S	S	S	S	S	S	S	S	S	S	S
AK Dept of Mil & Veteran's Affairs (DMVA)		P	P	P	P	S	S	S	S	P	S	S	P	P
AK Dept of Administration (DOA)		S	S		S				S	S			S	S
AK Dept of Commerce, Community & Economic Dev (DCCED)		S	S		S		S	S	S	S				S
AK Dept. of Corrections (DOC)		S			S	S								S
AK Dept of Education & Early Development (DEED)		S			S		S					S		S
AK Dept of Environmental Conservation (DEC)		S	S	S	S	S	S	S	S	S				S
AK Dept of Fish & Game (DFG)		S			S	S			S	S				S
AK Dept of Health & Social Services (DHSS)		S		S	S	S	P		S	S	P	S		S
AK Dept of Labor & Workforce Development (DOL)		S			S		S		S					S
AK Dept of Law (DLAW)		S			S				S			S	S	S
AK Dept of Natural Resources (DNR)		S		S	S		S		P	S				S
AK Dept of Public Safety (DPS)		S			S	P					S	S		S
AK Dept of Revenue (DOR)		S			S		S							S
AK Dept of Trans & Public Facilities		S			S	S		P	S	S				S
Office of Management & Budget (OMB)					S				S				S	

# Local Incident Management Teams/Unified Commands



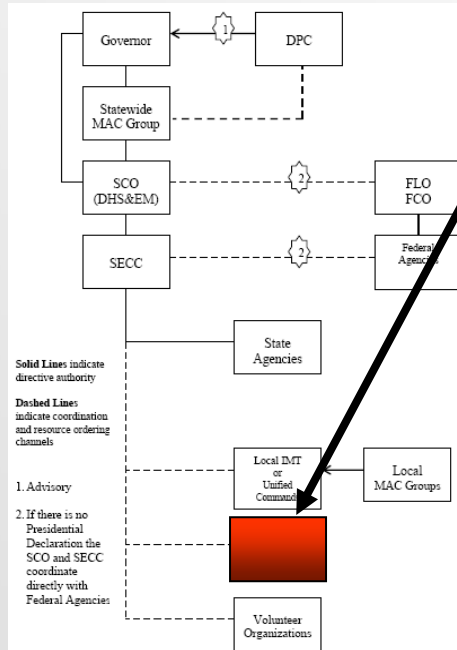
- **Role:** Direct response operations to save lives, protect property, minimize damage, maintain or restore essential services in accordance with local Emergency Operations Plans.
- **Composition:** Typically staffed with first responders (fire, police, EMS), public works, health care, etc, and local executive officials. May be organized through Incident Management Team/ICS structure, Unified Command, and Emergency Operations Centers.

# Local Multi-Agency Coordination (MAC) Group



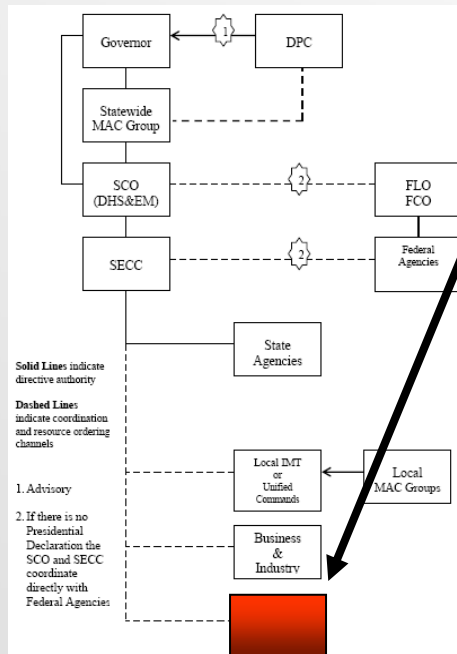
- **Role:** Accomplishes executive level interagency coordination and establishes policy, objectives, and priorities that drive local Incident Management Teams.
- **Composition:** Top management personnel from responsible agencies, organizations, and jurisdictions supporting or impacted by the event. Fully authorized to represent and act on behalf of their parent organization. May be established for events impacting multiple Cities or Villages within a Borough, or with multiple Boroughs as necessary.

# Business and Industry



- **Role:** Direct response operations to save lives, protect property, minimize damage, maintain or restore essential services, and protect employees and business functions in accordance with corporate Emergency Operations and Business Continuity Plans.
- **Composition:** Chief Executive Officers, Operating Officers, Risk Managers, Emergency Managers, and employees.

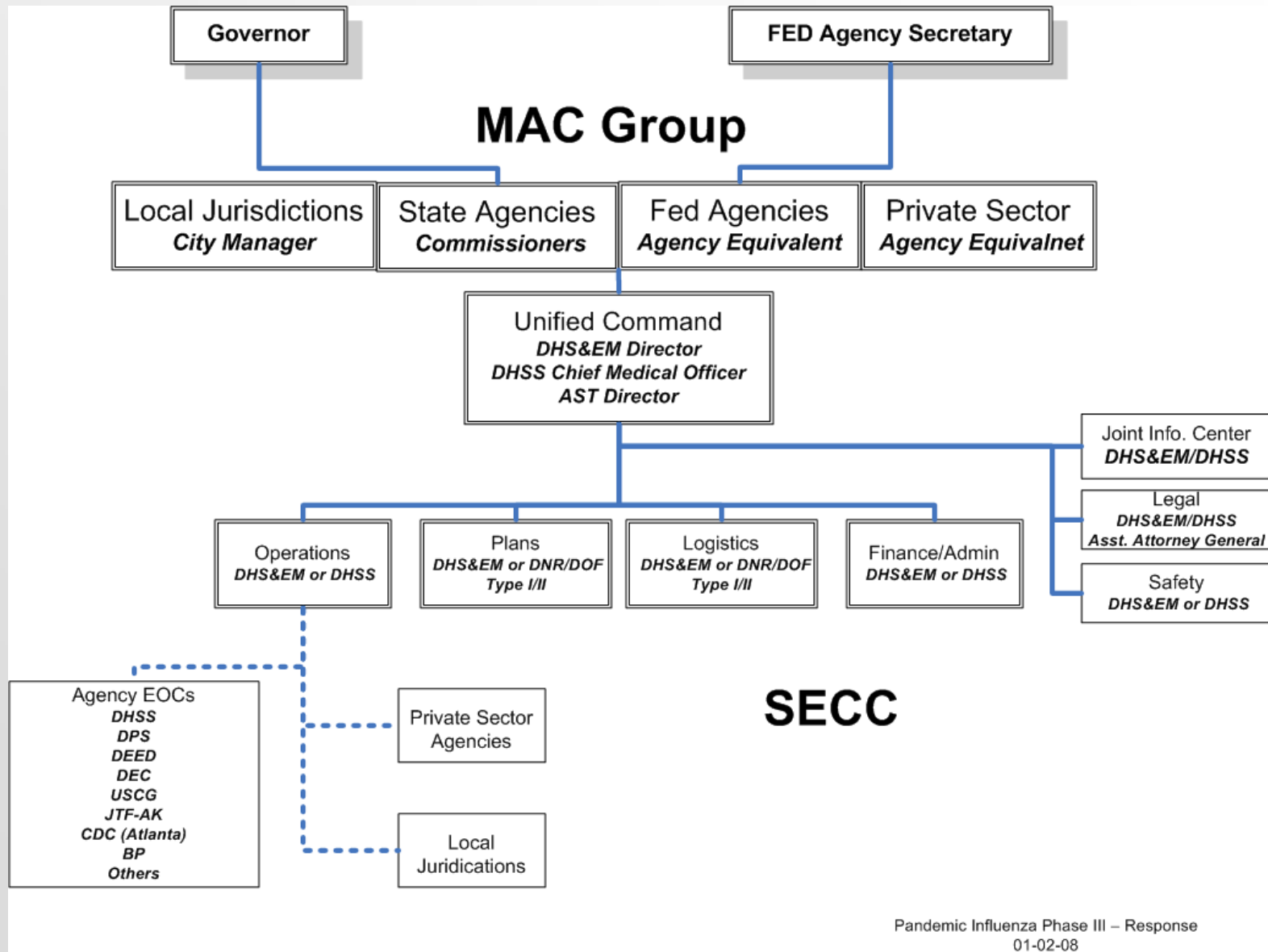
# Volunteer Organizations



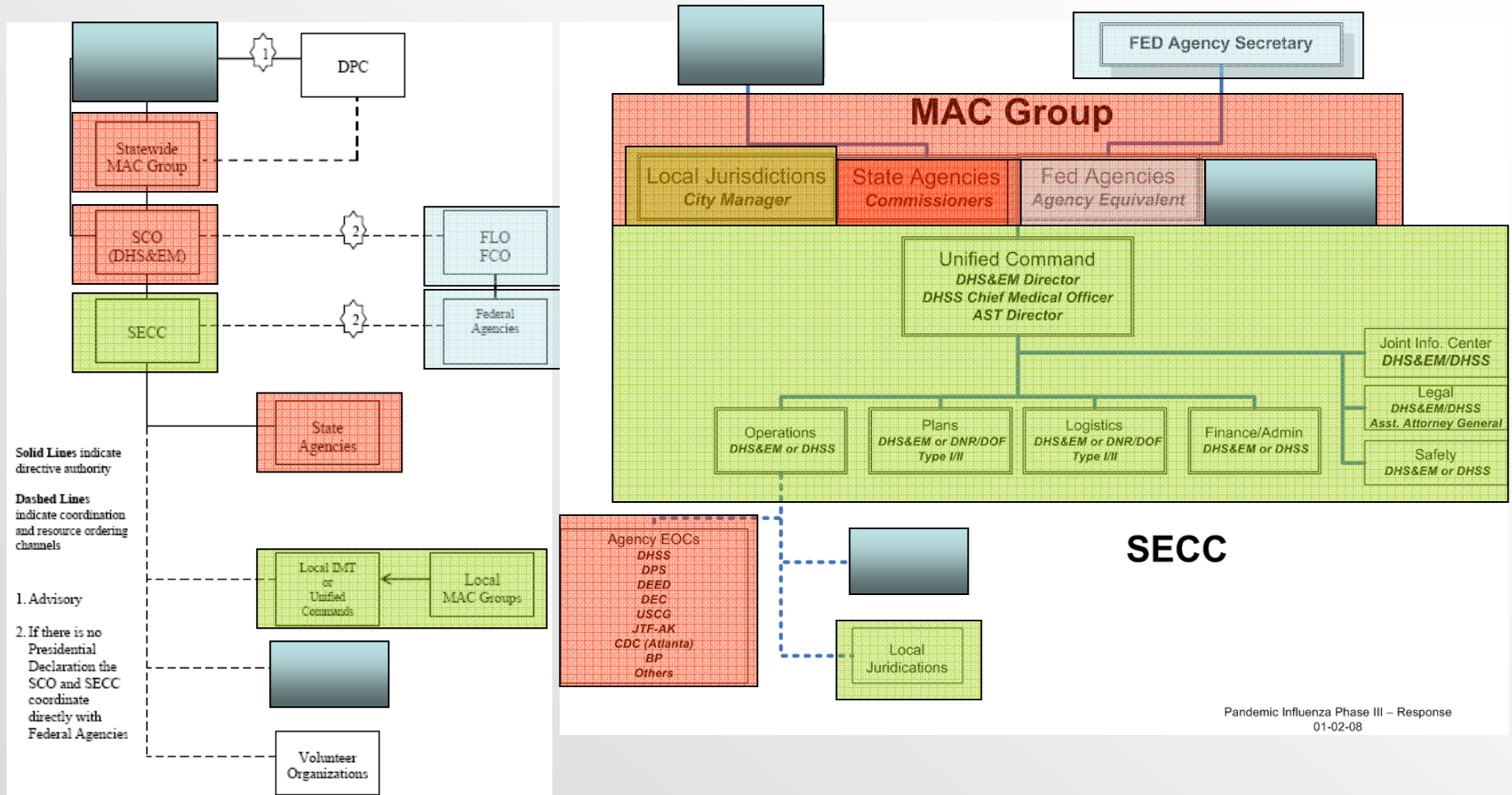
- **Role:** Direct response operations to provide for mass care, sheltering, donations management, and other relief efforts as needed.

**Composition:** Alaska Volunteer Organizations Active in Disasters (AKVOAD) members including American Red Cross, Salvation Army, and other community and faith-based organizations.

# Alaska Pandemic Flu Response Organization



# Alaska's Pandemic Flu Response Organization



**Alaska Emergency Response Plan**

**Alaska Pandemic Influenza Response Organization**



City of Bethel



Y-K Delta Regional Hospital/  
Yukon Kuskokwim Health Corporation



DHSS EOC



Alaska Native  
Tribal Health  
Consortium

